

# MANDRIL MODULAR

## MODULAR TAPER SHANK

Rev. 1

SISTEMA MODULAR - ADAPTAÇÕES  
MODULAR SYSTEM - ADAPTATIONS



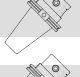
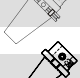
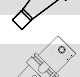
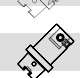







**YNOWA**

MADE IN BRAZIL

# MANDRIL MODULAR

## ÍNDICE / Table of Contents

DIN 69871-AD+B		04
MAS 403-BT		05
ANSI B5.50-MÉTRICO		06
DIN 69871-AD / ISO 7388-1 / ANSI B5.50 / CAT-MÉTRICO / METRIC		07
DIN 2080-A		08
DIN 69893-A		09
DIN 69893-C		10
ADAPTAÇÃO MODULAR / ADAPTATION MODULAR		11
TIPOS DE ADAPTAÇÃO MODULAR / ADAPTATION MODULAR TYPES		12
COMPONENTES / SPARE PARTS		12
DADOS TÉCNICOS / TECHNICAL DATA		13
TIPOS DE CONE - INFORMAÇÕES TÉCNICAS / TAPER SHANK - TECHNICAL DATA		14 à 22

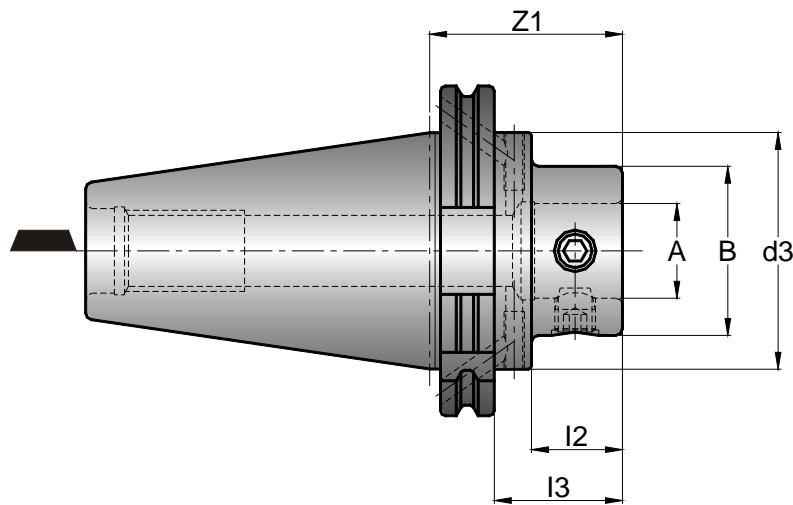
DIMENSÕES EM mm(milímetros), QUANDO NÃO ESPECIFICADO.  
ALL DIMENSIONS, WHEN NOT SPECIFIED, CONSIDER mm(millimeter).

RESERVAMO-NOS O DIREITO DE ALTERAR AS DIMENSÕES DOS PRODUTOS DESTE CATÁLOGO SEM PRÉVIO AVISO.  
ALL TOOL SPECIFICATIONS ARE SUBJECT TO CHANGE WITHOUT PRIOR NOTICE.

# SISTEMA MODULAR / MODULAR SYSTEM

## DIN 69871-AD+B COM ADAPTAÇÃO MODULAR

DIN 69871-AD+B TAPER SHANK WITH MODULAR ADAPTATION



**POSIÇÃO 0° DE UMA FERRAMENTA MONOCORTANTE**  
POSITION OF THE TOOL CUTTING EDGE ON A SINGLE CUTTER TOOL

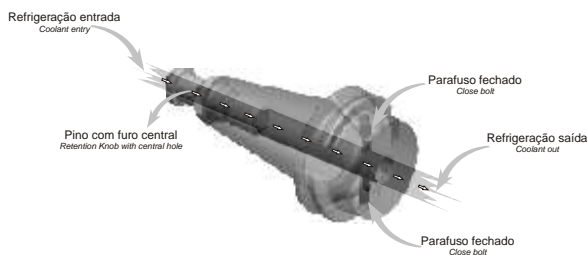
ISO	DIMENSÕES DA ADAPTAÇÃO Adaptation Dimensions						CÓDIGO Code
	A	B	d3	I2	I3	Z1	
40	11	18	50	16	25.9	45	241 90 80
	11	22	50	16	25.9	45	241 90 81
	14	25	50	17	26.9	46	241 90 00
	18	32	50	19	26.9	46	241 90 10
	22	40	-	-	26.9	46	241 90 20
	28	50	50	-	26.9	46	241 90 30
	36	63	50	30	46.9	66	241 90 40
50	11	18	-	15	25.9	45	243 90 80
	11	22	-	15	25.9	45	243 90 81
	14	25	-	-	26.9	46	243 90 00
	18	32	-	-	26.9	46	243 90 10
	22	40	-	-	26.9	46	243 90 20
	28	50	80	24	36.9	56	243 90 30
	36	63	80	31	36.9	56	243 90 40
	36	80	80	-	36.9	56	243 90 50
	46	100	80	41	56.9	76	243 90 70

Peças sobressalentes pág.: 12  
Spare parts page: 12

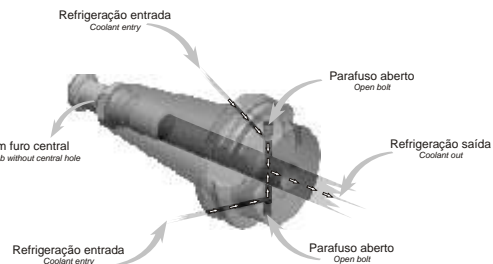
Exemplo para pedido / Ordering example : 10 pçs - 241 90 30

## SISTEMA DE REFRIGERAÇÃO / COOLANT SYSTEM

REFRIGERAÇÃO CENTRAL - FORMA AD  
CENTRAL COOLANT - FORM AD



REFRIGERAÇÃO PELA FLANGE - FORMA B  
FLANGE COOLANT - FORM B



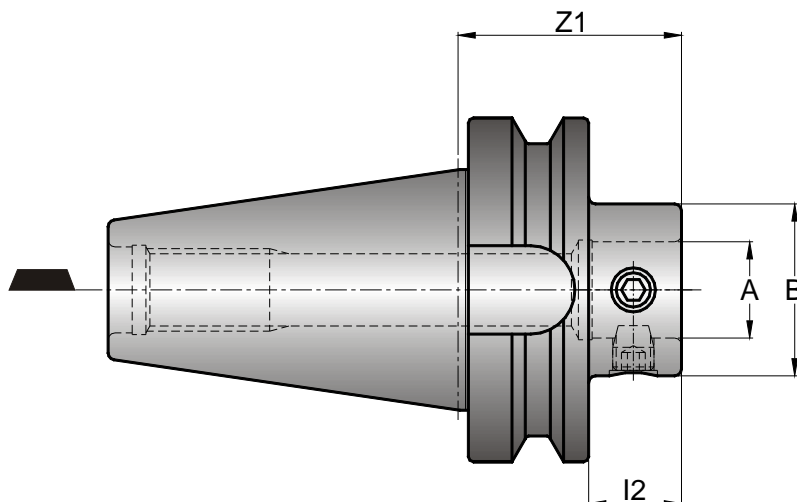
Observações:

- 1) Z1 menor ou maior que o indicado, somente sob consulta
- 2) Sistema com refrigeração interna

Remarks:

- 1) Z1 dimension different than presented, only with previous consult
- 2) With internal coolant system

## CONE MAS 403-BT COM ADAPTAÇÃO MODULAR MAS 403-BT TAPER SHANK WITH MODULAR ADAPTATION




**POSIÇÃO 0° DE UMA FERRAMENTA MONOCORTANTE**  
POSITION OF THE TOOL CUTTING EDGE ON A SINGLE CUTTER TOOL

ISO	DIMENSÕES DA ADAPTAÇÃO <i>Adaptation Dimensions</i>				CÓDIGO <i>Code</i>
	A	B	I2	Z1	
30	11	18	13	35	360 90 80
	11	22	13	35	360 90 81
	14	25	15	39	360 90 00
	18	32	23	49	360 90 10
	22	40	24	49	360 90 20
	28	50	23	51	360 90 30
	36	63	52	80	360 90 40
40	11	18	17,8	45	361 90 80
	11	22	17,8	45	361 90 81
	14	25	16,8	44	361 90 00
	18	32	26,8	54	361 90 10
	22	40	26,8	54	361 90 20
	28	50	26,8	54	361 90 30
	36	63	42,8	70	361 90 40
50	11	18	17	55	363 90 80
	11	22	17	55	363 90 81
	14	25	17	55	363 90 00
	18	32	22	60	363 90 10
	22	40	22	60	363 90 20
	28	50	27	65	363 90 30
	36	63	37	75	363 90 40
	36	80	37	75	363 90 50
	46	100	-	75	363 90 70



Exemplo para pedido / Ordering example : 10 pçs - 361 90 30

Peças sobressalentes pág.: 12  
Spare parts page: 12

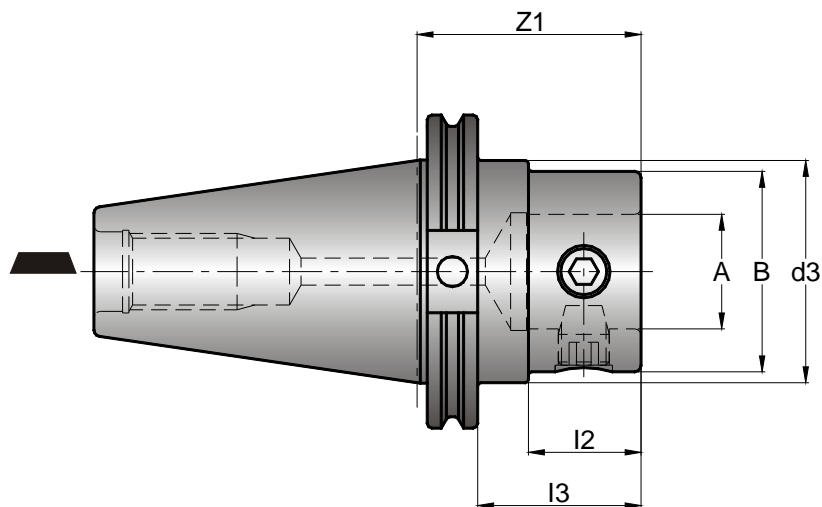
**Observações:**

- 1) Z1 menor ou maior que o indicado, somente sob consulta
- 2) Sistema com refrigeração interna 

**Remarks:**

- 1) Z1 dimension different than presented, only with previous consult 
- 2) With internal coolant system 

## CONE ANSI B5.50-MÉTRICO COM ADAPTAÇÃO MODULAR ANSI B5.50-METRIC TAPER SHANK WITH MODULAR ADAPTATION



### POSIÇÃO 0° DE UMA FERRAMENTA MONOCORTANTE POSITION OF THE TOOL CUTTING EDGE ON A SINGLE CUTTER TOOL

ISO	DIMENSÕES DA ADAPTAÇÃO Adaptation Dimensions						CÓDIGO Code
	A	B	d3	I2	I3	Z1	
40	11	18	44,45	15	30,95	50	341 90 80
	11	22	44,45	15	30,95	50	341 90 81
	14	25	44,45	17	32,95	52	341 90 00
	18	32	44,45	27	42,95	62	341 90 10
	22	40	44,45	27	42,95	62	341 90 20
	28	50	44,45	27	42,95	62	341 90 30
	36	63	44,45	47	62,95	82	341 90 40
50	11	18	69,85	15	30,95	50	343 90 80
	11	22	69,85	15	30,95	50	343 90 81
	14	25	69,85	17	32,95	52	343 90 00
	18	32	69,85	27	42,95	62	343 90 10
	22	40	69,85	27	42,95	62	343 90 20
	28	50	69,85	27	42,95	62	343 90 30
	36	63	69,85	37	52,95	72	343 90 40
	36	80	69,85	37	52,95	72	343 90 50
	46	100	69,85	37	52,95	72	343 90 70

Exemplo para pedido / Ordering example : 10 pçs - 341 90 30

Peças sobressalentes pág.: 12  
Spare parts page: 12

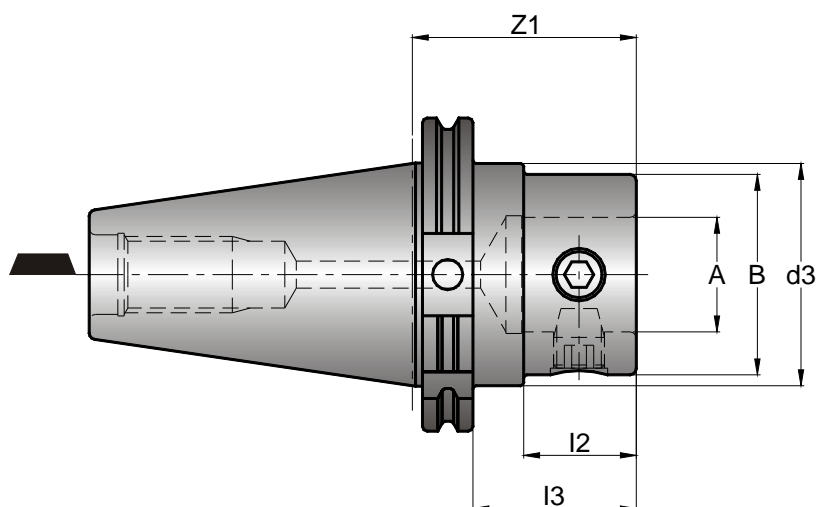
#### Observações:

- 1) Z1 menor ou maior que o indicado, somente sob consulta
- 2) Sistema com refrigeração interna

#### Remarks:

- 1) Z1 dimension different than presented, only with previous consult
- 2) With internal coolant system

## CONE UNIFICADO DIN 69871-AD / ISO 7388-1 / ANSI B5.50 / CAT-MÉTRICO COM ADAPTAÇÃO MODULAR UNIFIED DIN 69871-AD / ISO 7388-1 / ANSI B5.50 / CAT-METRIC TAPER SHANK WITH MODULAR ADAPTATION



### POSIÇÃO 0° DE UMA FERRAMENTA MONOCORTANTE POSITION OF THE TOOL CUTTING EDGE ON A SINGLE CUTTER TOOL

ISO	DIMENSÕES DA ADAPTAÇÃO <i>Adaptation Dimensions</i>						CÓDIGO <i>Code</i>
	A	B	d3	I2	I3	Z1	
40	11	18	44,45	13	28,9	48	271 90 80
	11	22	44,45	13	28,9	48	271 90 81
	14	25	44,45	17	32,9	52	271 90 00
	18	32	44,45	27	42,9	62	271 90 10
	22	40	44,45	27	42,9	62	271 90 20
	28	50	44,45	27	42,9	62	271 90 30
	36	63	44,45	47	62,9	82	271 90 40
50	11	18	69,85	13	28,9	48	273 90 80
	11	22	69,85	13	28,9	48	273 90 81
	14	25	69,85	17	32,9	52	273 90 00
	18	32	69,85	27	42,9	62	273 90 10
	22	40	69,85	27	42,9	62	273 90 20
	28	50	69,85	27	42,9	62	273 90 30
	36	63	69,85	37	52,9	72	273 90 40
	36	80	69,85	37	52,9	72	273 90 50
	46	100	69,85	37	52,9	72	273 90 70

Exemplo para pedido / Ordering example : 10 pçs - 271 90 30

Peças sobressalentes pág.: 12  
Spare parts page: 12

#### Observações:

- 1) Z1 menor ou maior que o indicado, somente sob consulta
- 2) Sistema com refrigeração interna

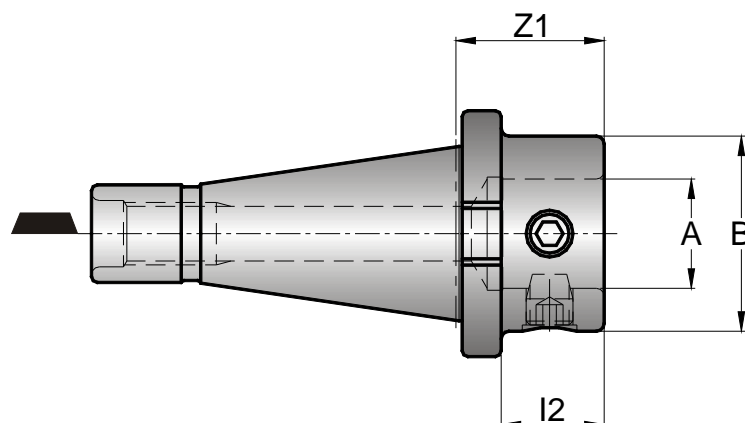


#### Remarks:

- 1) Z1 dimension different than presented, only with previous consult
- 2) With internal coolant system



## CONE DIN 2080-A COM ADAPTAÇÃO MODULAR DIN 2080-A TAPER SHANK WITH MODULAR ADAPTATION



### POSIÇÃO 0° DE UMA FERRAMENTA MONOCORTANTE POSITION OF THE TOOL CUTTING EDGE ON A SINGLE CUTTER TOOL

ISO	DIMENSÕES DA ADAPTAÇÃO Adaptation Dimensions				CÓDIGO Code
	A	B	I2	Z1	
30	11	18	15.4	25	200 90 80
	11	22	15.4	25	200 90 81
	14	25	22,4	32	200 90 00
	18	32	28,4	38	200 90 10
	22	40	28,4	38	200 90 20
	28	50	28,4	38	200 90 30
40	11	18	13.4	25	201 90 80
	11	22	13.4	25	201 90 81
	14	25	20,4	32	201 90 00
	18	32	26,4	38	201 90 10
	22	40	26,4	38	201 90 20
	28	50	26,4	38	201 90 30
	36	63	46,4	48	201 90 40
50	11	18	12.8	28	203 90 80
	11	22	12.8	28	203 90 81
	14	25	16,8	32	203 90 00
	18	32	22,8	38	203 90 10
	22	40	22,8	38	203 90 20
	28	50	22,8	38	203 90 30
	36	63	36,8	52	203 90 40
	36	80	36,8	52	203 90 50
	46	100	52,8	68	203 90 70

Peças sobressalentes pág.: 12  
Spare parts page: 12

Exemplo para pedido / Ordering example : 10 pçs - 201 90 30

#### Observações:

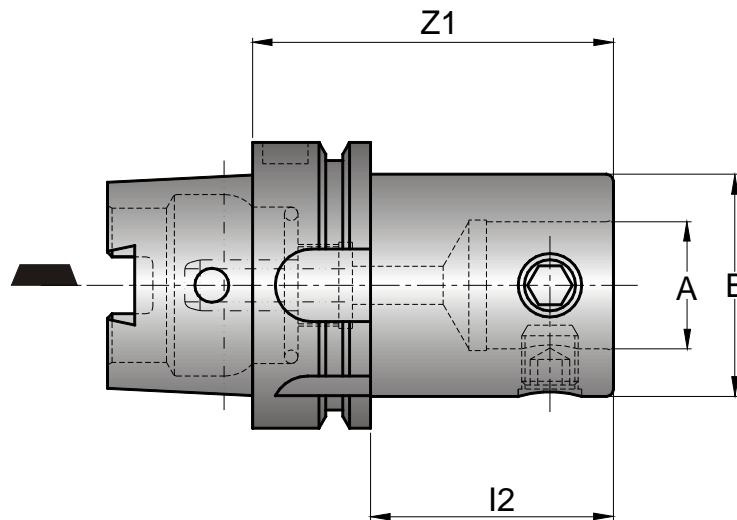
- 1) Z1 menor ou maior que o indicado, somente sob consulta
- 2) Sistema com refrigeração interna

#### Remarks:

- 1) Z1 dimension different than presented, only with previous consult
- 2) With internal coolant system



## CONE DIN 69893-A COM ADAPTAÇÃO MODULAR DIN 69893-A TAPER SHANK WITH MODULAR ADAPTATION



### POSIÇÃO 0° DE UMA FERRAMENTA MONOCORTANTE POSITION OF THE TOOL CUTTING EDGE ON A SINGLE CUTTER TOOL

DIMENSÕES DA ADAPTAÇÃO Adaptation Dimensions						
DIN 69 893 A	A	B	l2	Z1	<b>Kg</b>	CÓDIGO Code
50	11	18	12	38	0.5	452 90 80
	11	22	12	38	0.5	452 90 81
	14	25	18	44	0.5	452 90 00
	18	32	38	64	0.7	452 90 10
	22	40	39	65	0.8	452 90 20
	28	50	-	65	0.9	452 90 30
63	11	18	18	44	0.5	453 90 80
	11	22	18	44	0.6	453 90 81
	14	25	18	44	0.7	453 90 00
	18	32	38	64	0.9	453 90 10
	22	40	39	65	1.0	453 90 20
	28	50	39	65	1.1	453 90 30
	36	63	-	80	1.7	453 90 40
100	11	18	19	48	2.1	455 90 80
	11	22	19	48	2.2	455 90 81
	14	25	20	49	2.2	455 90 00
	18	32	35	64	2.3	455 90 10
	22	40	36	65	2.4	455 90 20
	28	50	36	65	2.5	455 90 30
	36	63	51	80	3.1	455 90 40
	36	80	51	80	3.8	455 90 50

Peças sobressalentes pág.: 12  
Spare parts page: 12

Exemplo para pedido / Ordering example : 10 pçs - 453 90 30

#### Observações:

- 1) Z1 menor ou maior que o indicado, somente sob consulta
- 2) Sistema com refrigeração interna



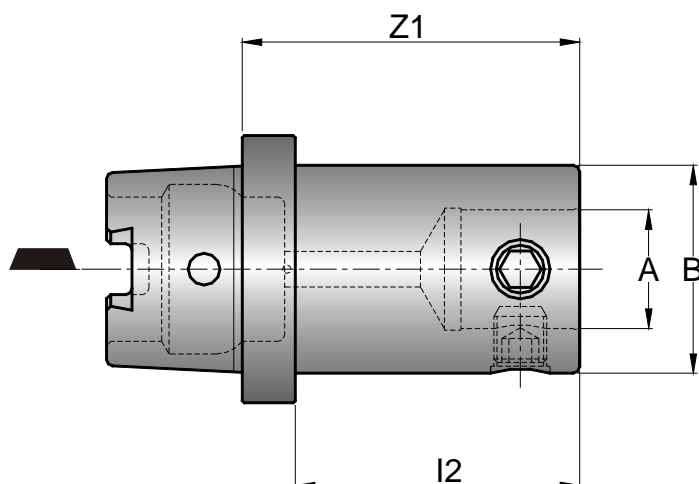
#### Remarks:

- 1) Z1 dimension different than presented, only with previous consult
- 2) With internal coolant system





## CONE DIN 69893-C COM ADAPTAÇÃO MODULAR DIN 69893-C TAPER SHANK WITH MODULAR ADAPTATION



### POSIÇÃO 0° DE UMA FERRAMENTA MONOCORTANTE POSITION OF THE TOOL CUTTING EDGE ON A SINGLE CUTTER TOOL

DIN 69 893 C	DIMENSÕES DA ADAPTAÇÃO Adaptation Dimensions				Kg	CÓDIGO Code
	A	B	l2	Z1		
50	11	18	17.5	30	0.4	462 90 80
	11	22	17.5	30	0.4	462 90 81
	14	25	31.5	44	0.4	462 90 00
	18	32	51.5	64	0.5	462 90 10
	22	40	52.5	65	0.6	462 90 20
	28	50	-	65	0.7	462 90 30
63	11	18	17.5	30	0.4	463 90 80
	11	22	17.5	30	0.4	463 90 81
	14	25	31.5	44	0.4	463 90 00
	18	32	51.5	64	0.6	463 90 10
	22	40	52.5	65	0.7	463 90 20
	28	50	52.5	65	0.8	463 90 30
	36	63	-	80	1.4	463 90 40
100	11	18	19	35	1.4	465 90 80
	11	22	19	35	1.4	465 90 81
	14	25	33	49	1.5	465 90 00
	18	32	48	64	1.6	465 90 10
	22	40	49	65	1.7	465 90 20
	28	50	49	65	1.8	465 90 30
	36	63	64	80	2.4	465 90 40
	36	80	64	80	3.1	465 90 50

Peças sobressalentes pág.: 12  
Spare parts page: 12

Exemplo para pedido / Ordering example : 10 pçs - 463 90 30

#### Observações:

- 1) Z1 menor ou maior que o indicado, somente sob consulta
- 2) Sistema com refrigeração interna



#### Remarks:

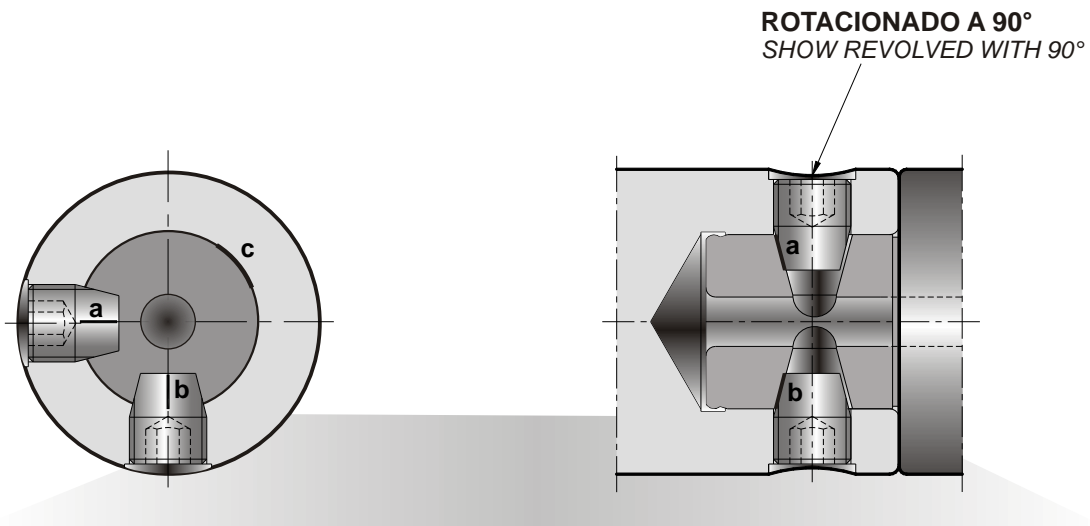
- 1) Z1 dimension different than presented, only with previous consult
- 2) With internal coolant system



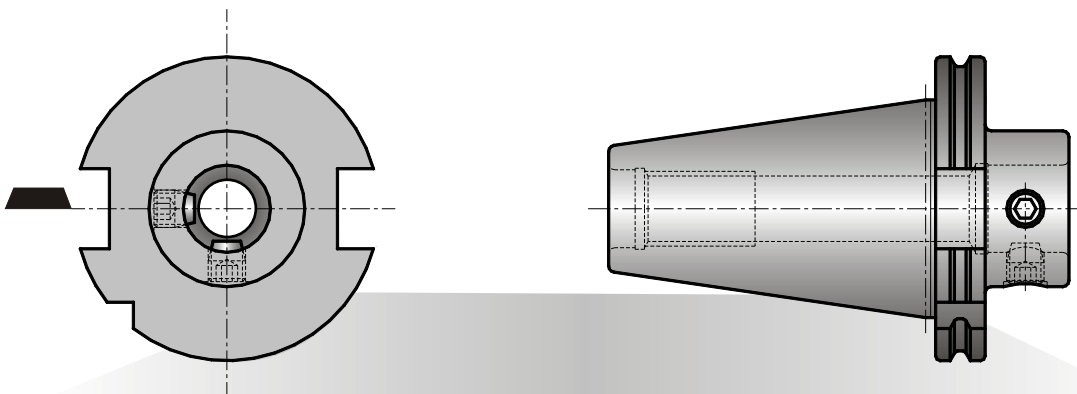
## ADAPTAÇÃO MODULAR MODULAR ADAPTATION

- FÁCIL ACESSO AOS PARAFUSOS CÔNICOS DE FIXAÇÃO
- EXCELENTE RIGIDEZ DE FIXAÇÃO AXIAL E RADIAL ATRAVÉS DE 3 PONTOS; a, b, c (VER FIGURA A)
- PRECISÃO QUANTO AO POSICIONAMENTO ANGULAR
- PASSAGEM INTERNA DE FLUIDO REFRIGERANTE
- EXCELENTE PRECISÃO DE CONCENTRIDADE E INTERCAMBIALIDADE ENTRE DIVERSOS ELEMENTOS
  
- EASY ACCESS TO THREADED TAPER PINS
- HIGH DEGREE OF RIGIDITY OF FIXING AXIAL AND RADIAL THROUGH AT 3 POINTS: a, b, c (SEE FIGURE A)
- PRECISE ANGULAR POSITION ENSURED
- COOLANT FEED ASSURED
- HIGH DEGREE OF ACCURACY AT CONCENTRICITY AND INTERCHANGEABILITY BETWEEN DIFFERENTS ELEMENTS

**FIGURA A**  
FIGURE A

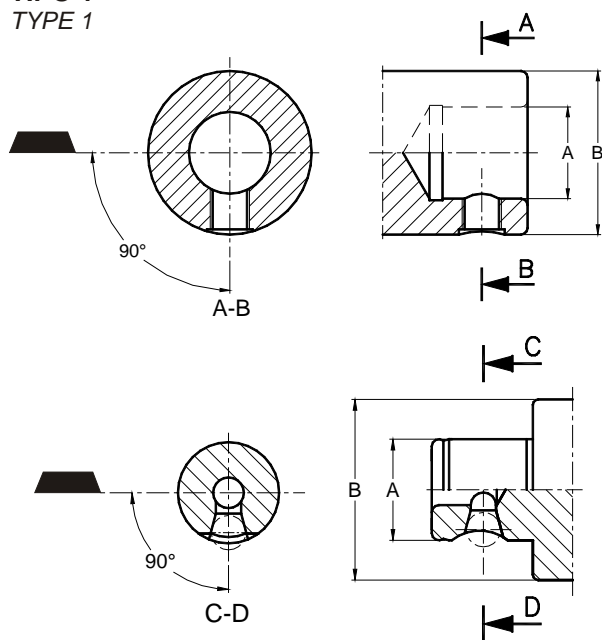


**POSIÇÃO DE CORTE**  
CUTTING TOOL POSITION

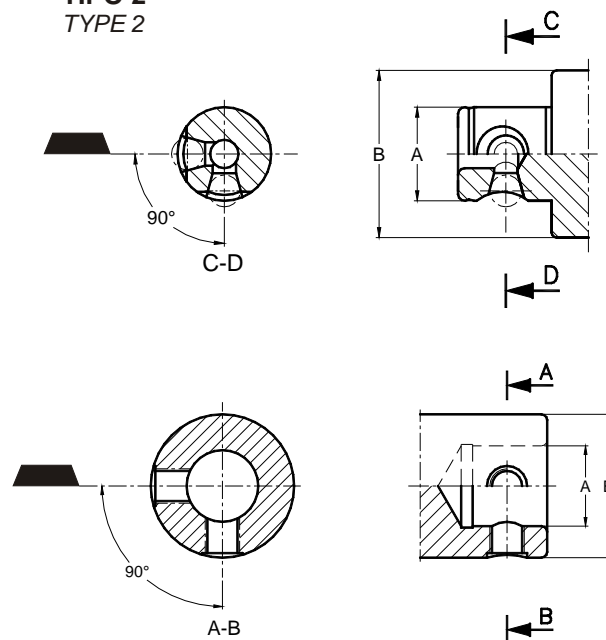


## TIPO DE ADAPTAÇÃO MODULAR MODULAR ADAPTATION TYPE

### TIPO 1 TYPE 1



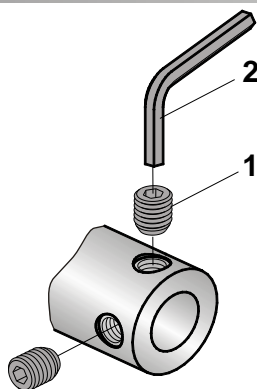
### TIPO 2 TYPE 2



 **POSIÇÃO 0° DE UMA FERRAMENTA MONOCORTANTE**  
POSITION OF THE TOOL CUTTING EDGE ON A SINGLE CUTTER TOOL

DIMENSIONAL		TIPO
A	B	
11	18	1
11	22	1
14	25	1
18	32	1
22	40	1
28	50	2
36	63	2
36	80	2
46	100	2

### COMPONENTES SPARE PARTS

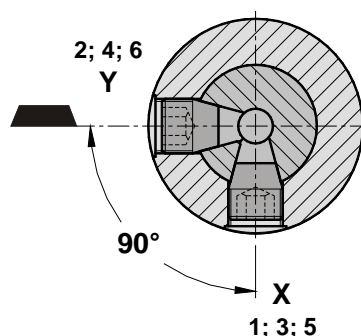


#### CÓDIGO PARA PEDIDO / ORDERING CODE

ADAPTAÇÃO ADAPTATION	1 - PARAFUSO 1 - SCREW	2 - CHAVE 2 - WRENCH
11 x 18	WPS 05 052	UCH 02 002
11 x 22	WPS 05 052	UCH 02 002
14 x 25	WPS 08 002	UCH 04 001
18 x 32	WPS 08 003	UCH 04 001
22 x 40	WPS 10 003	UCH 05 001
28 x 50	WPS 12 002	UCH 06 001
36 x 63	WPS 16 002	UCH 08 001
36 x 80	WPS 16 003	UCH 08 001
46 x 100	WPS 20 003	UCH 10 001

## PROCEDIMENTO PARA APERTO DO(S) PARAFUSO(S) DA ADAPTAÇÃO MODULAR

SCREW LOCKING PROCEDURE  
FOR MODULAR ADAPTATION



### POSIÇÃO 0° DE UMA FERRAMENTA MONOCORTANTE POSITION OF THE TOOL CUTTING EDGE ON A SINGLE CUTTER TOOL

#### INSTRUÇÕES

- A) APERTAR OS PARAFUSOS CONFORME TABELA ABAIXO, APERTANDO-OS NA SEQÜÊNCIA INDICADA
- B) DESCONSIDERAR O PARAFUSO INDICADO POR "Y" NAS ADAPTAÇÕES 11 x 18; 11 x 22; 14 x 25; 18 x 32 E 22 x 40
- C) NA DESMONTAGEM UTILIZAR A SEQÜÊNCIA INVERSA

#### INSTRUCTIONS

- A) TORQUE THE SCREWS ACCORDING THE TABLE BELOW AND IN THE INDICATED SEQUENCE
- B) DO NOT CONSIDER THE "Y" SCREW IN ADAPTATION 11 x 18; 11 x 22; 14 x 25; 18 x 32 E 22 x 40
- C) WHEN DISASSEMBLING USE THE REVERSAL SEQUENCE.



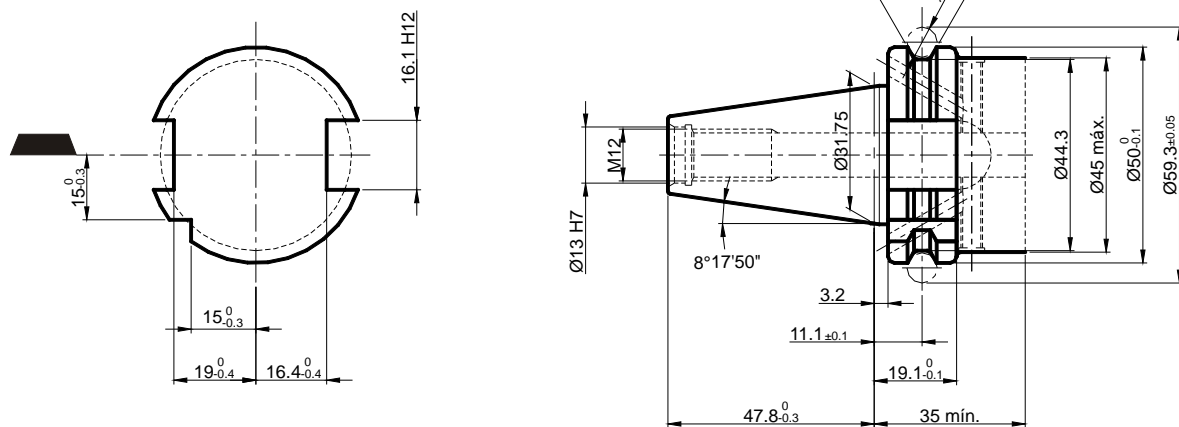
**UTILIZAR GRAXA PARA MONTAGEM DOS PARAFUSOS**  
USE GREASE IN THE SCREW TO ASSEMBLING

### TORQUE RECOMENDADO NOS PARAFUSOS / SCREW TORQUE RATINGS

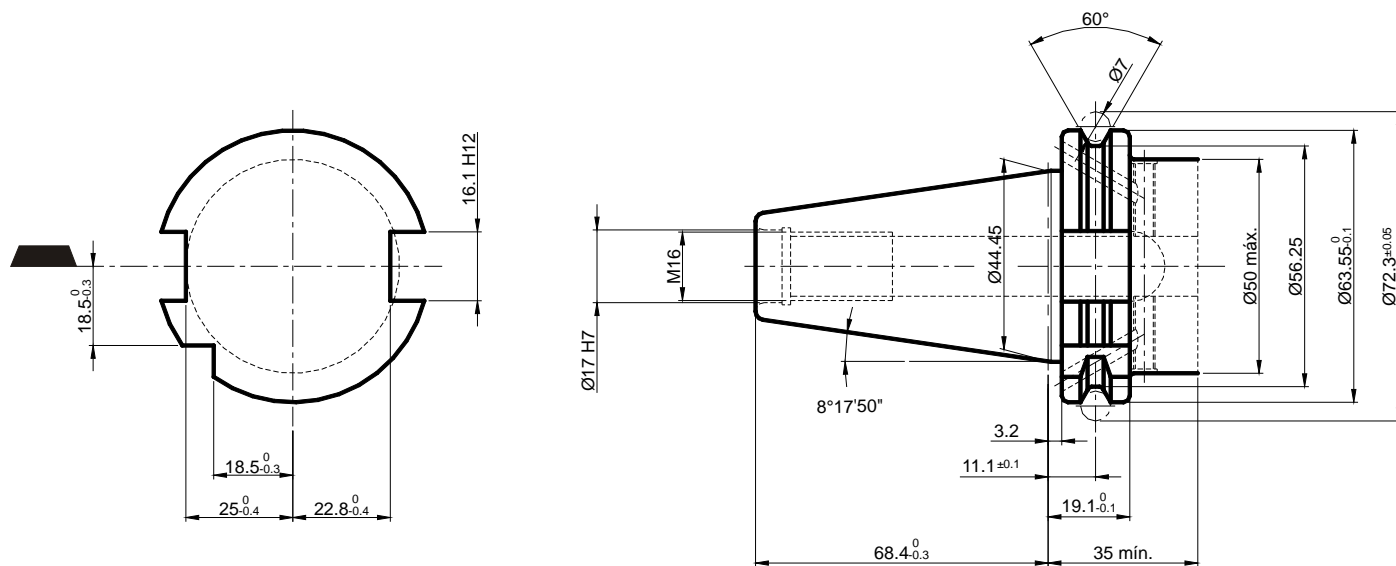
DIMENSIONAL DIMENSIONS		TORQUE / TORQUE (Nm)					
		INICIAL / INITIAL		INTERMEDIÁRIO INTERMEDIATE		FINAL / FINAL	
A	B	1X	2Y	3X	4Y	5X	6Y
11	18	4	-	7	-	10	-
11	22	4	-	7	-	10	-
14	25	6	-	10	-	12	-
18	32	6	-	10	-	12	-
22	40	11	-	18	-	22	-
28	50	13	13	20	20	25	25
36	63	15	15	24	24	30	30
36	80	15	15	24	24	30	30
46	100	20	20	32	32	40	40

# TIPOS DE CONE / TAPER SHANK TYPES

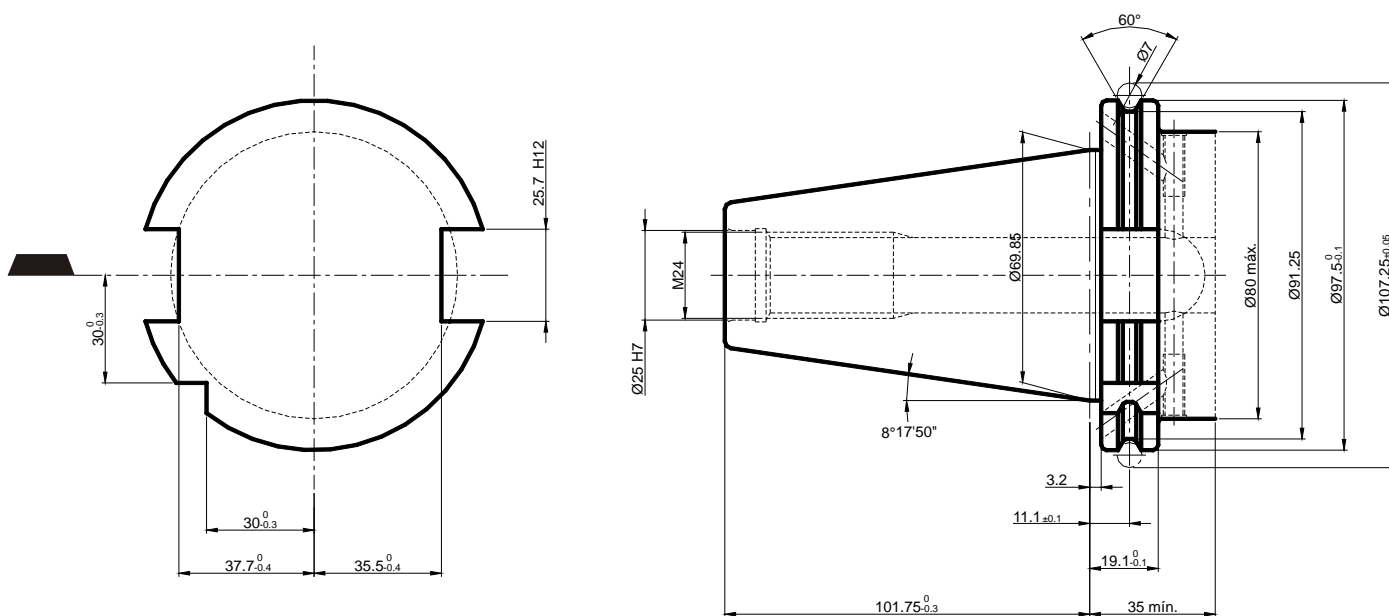
DIN 69871-AD/B 30



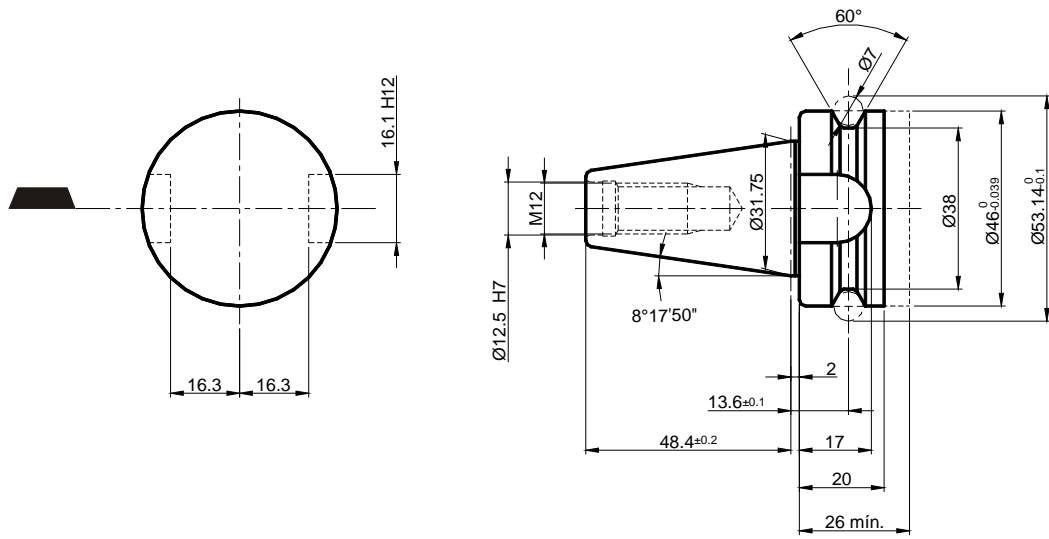
DIN 69871-AD/B 40



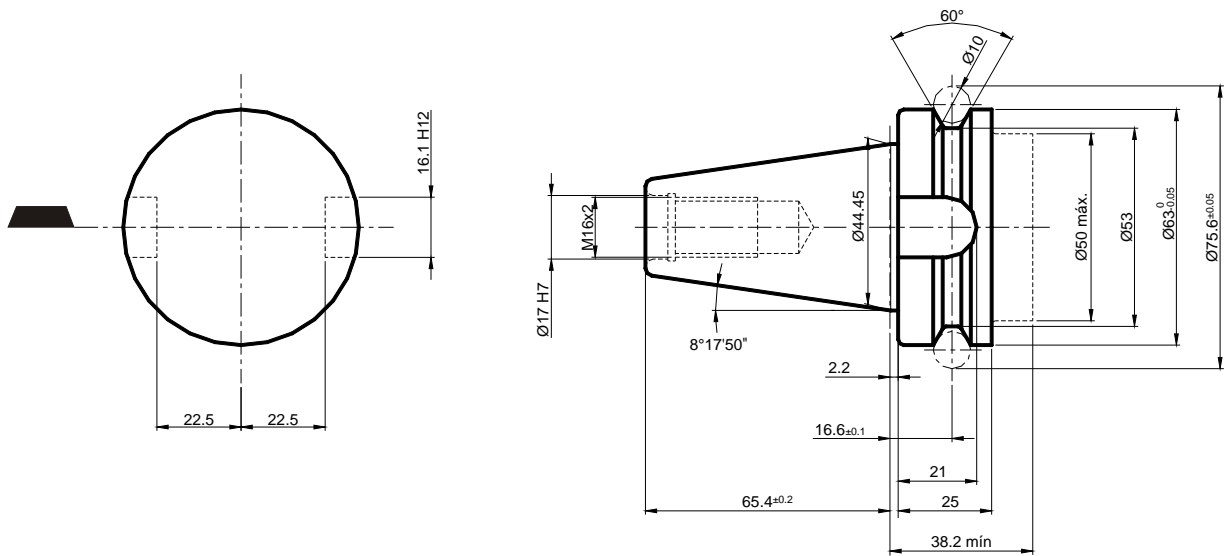
DIN 69871-AD/B 50



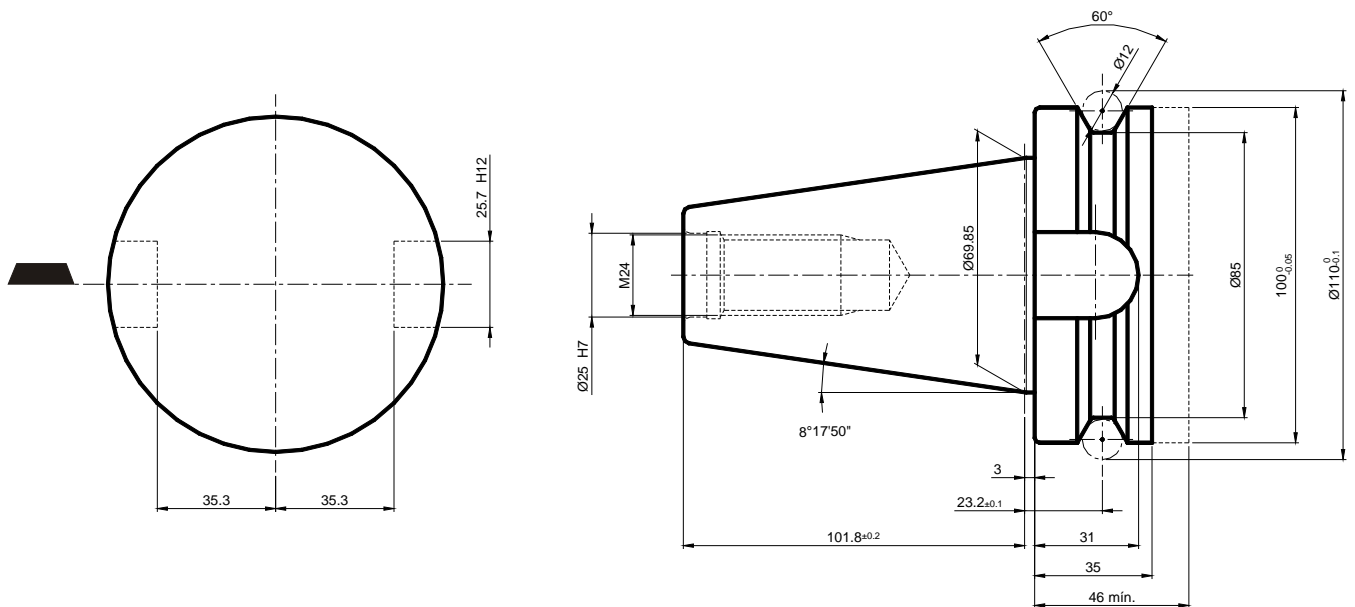
MAS BT-30



MAS BT-40

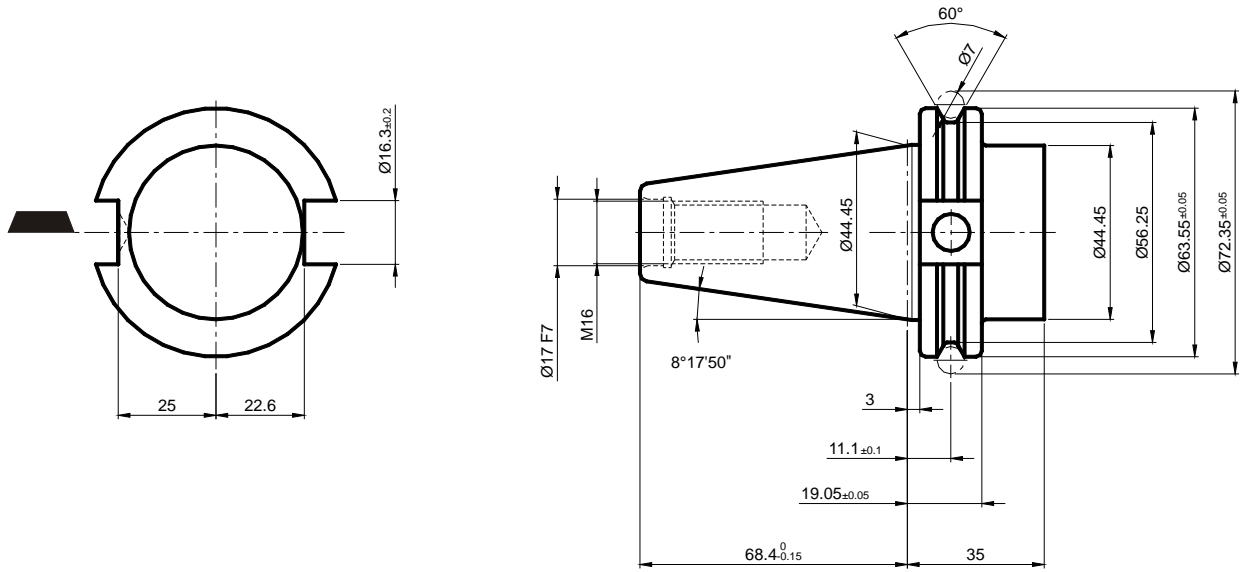


MAS BT-50

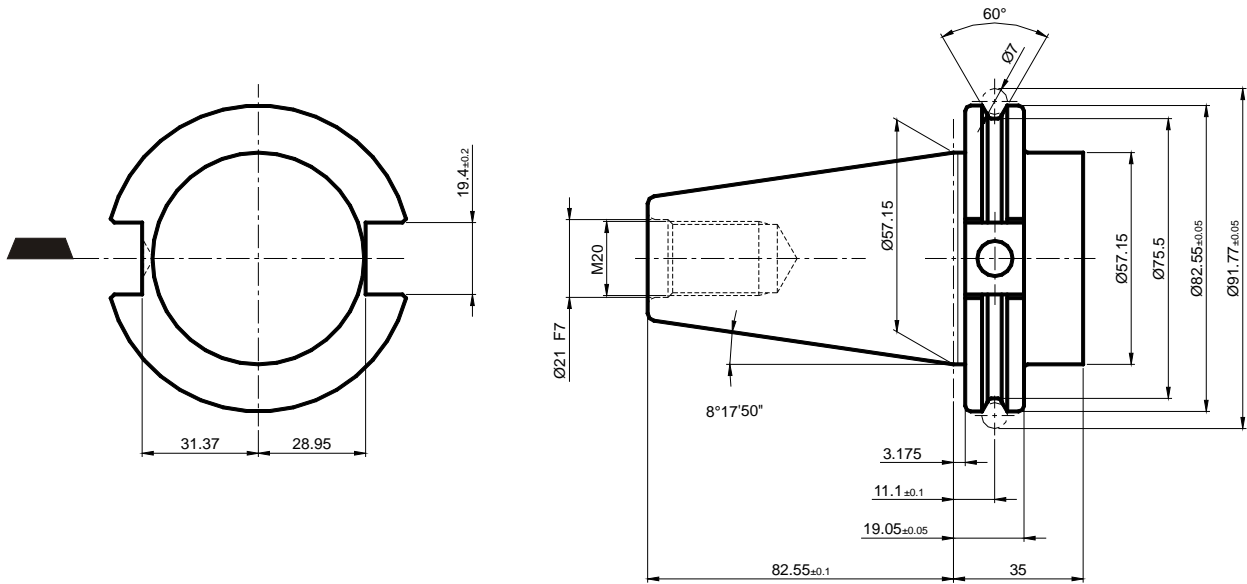


# TIPOS DE CONE / TAPER SHANK TYPES

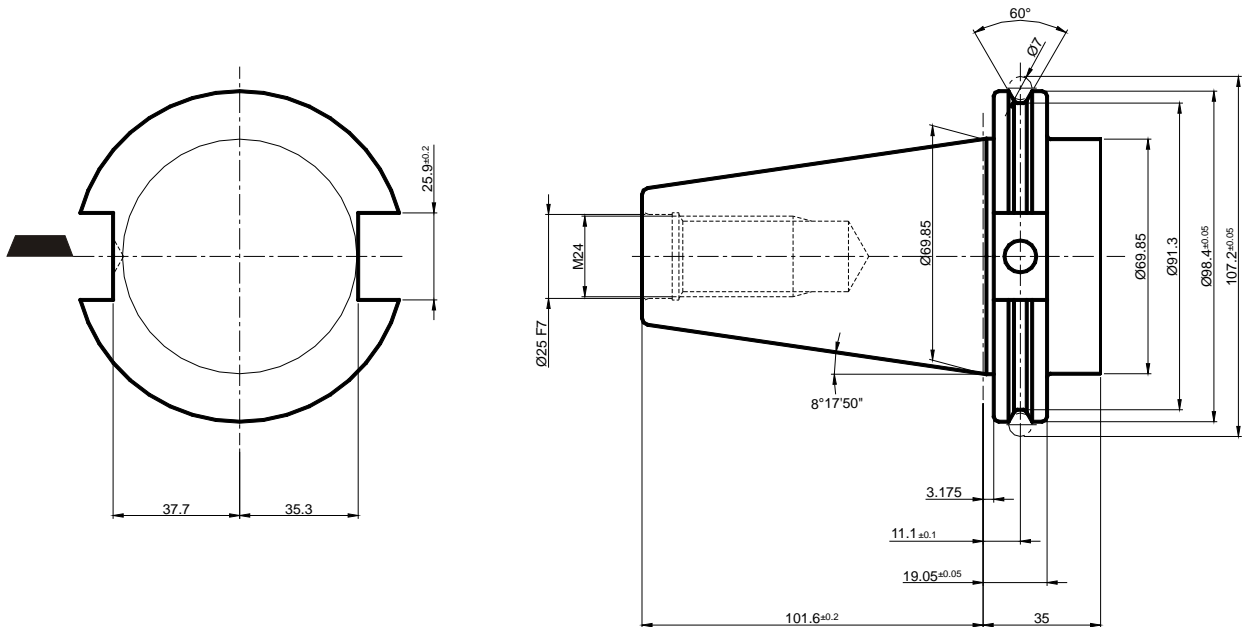
ANSI B5.50-40 métrico



ANSI B5.50-45 métrico

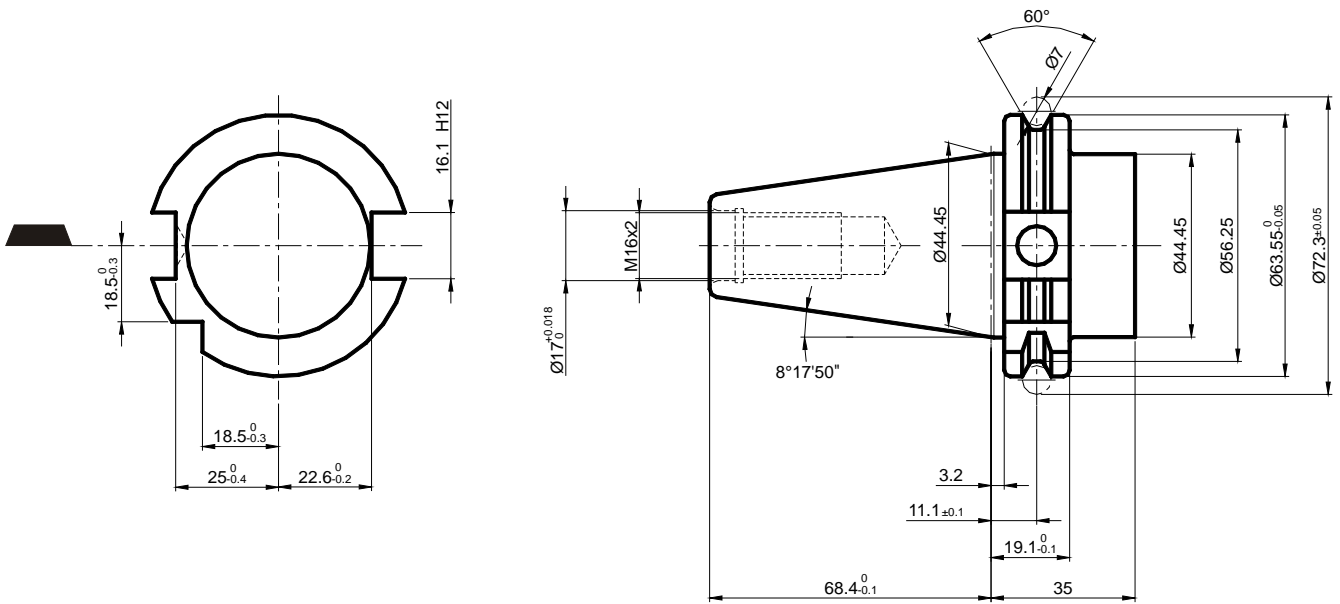


ANSI B5.50-50 métrico

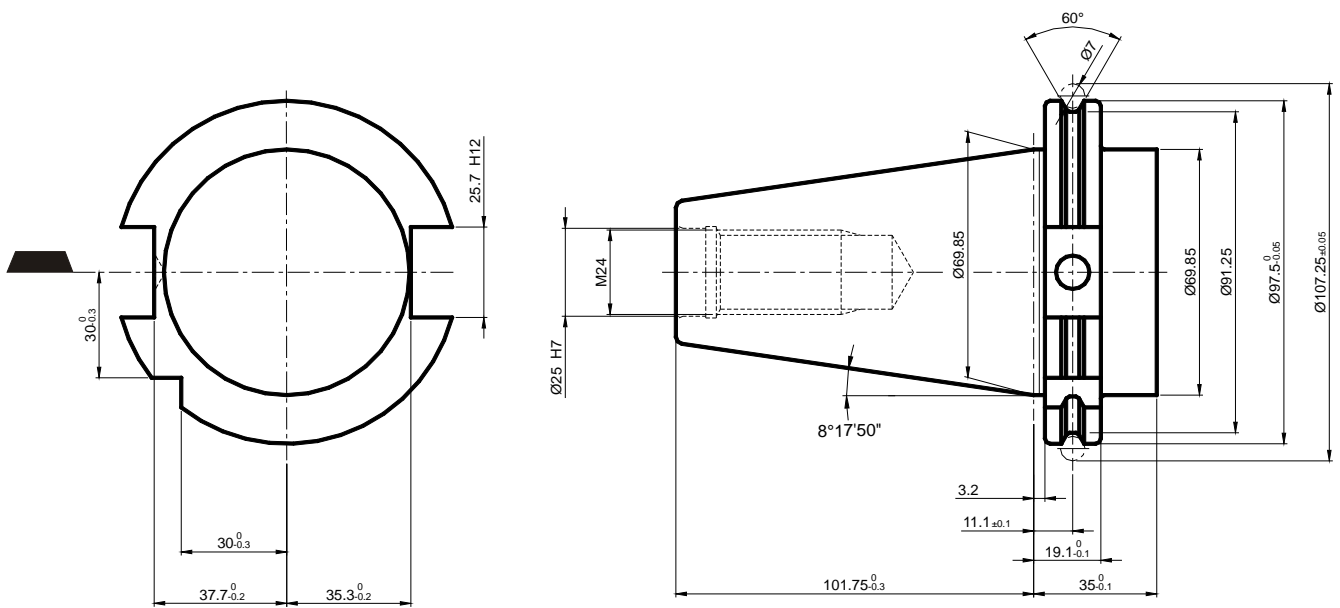




CONE UNIFICADO DIN 69871-AD / ISO 7388-1/  
ANSI B5.50 / CAT-40-MÉTRICO

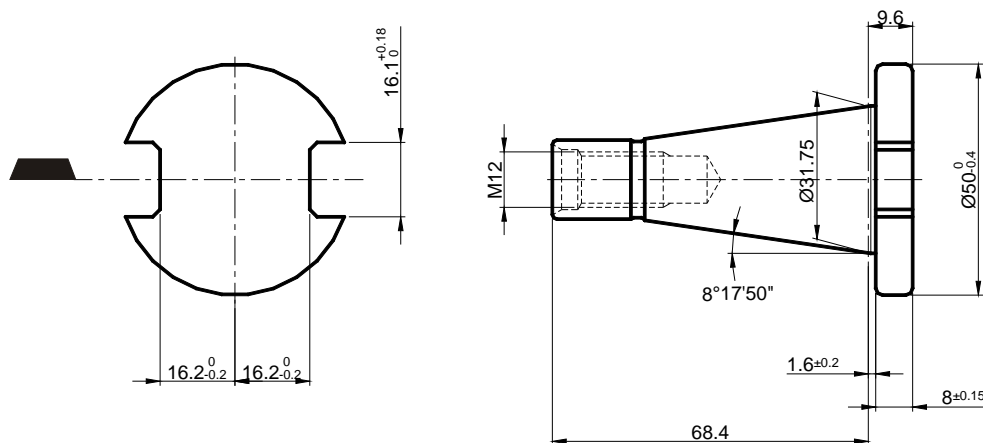


CONE UNIFICADO DIN 69871-AD / ISO 7388-1/  
ANSI B5.50 / CAT-50-MÉTRICO

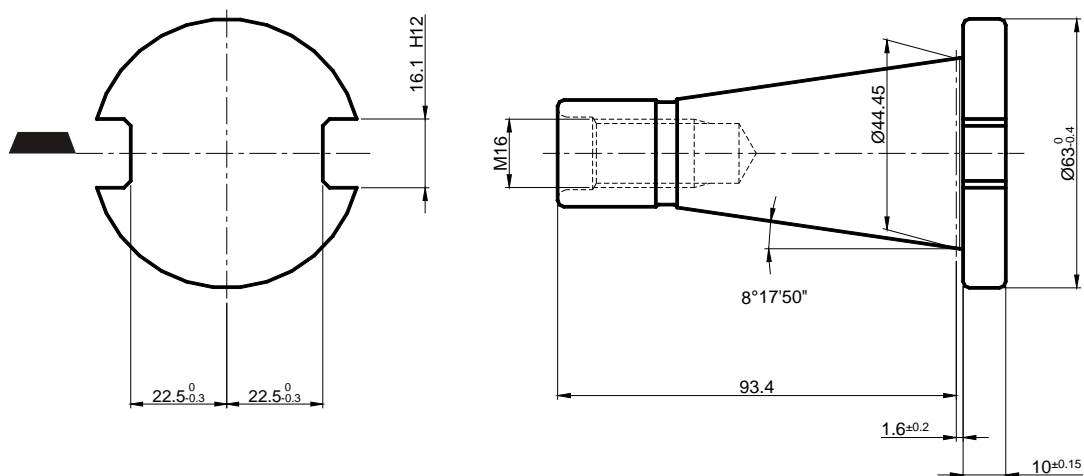


# TIPOS DE CONE / TAPER SHANK TYPES

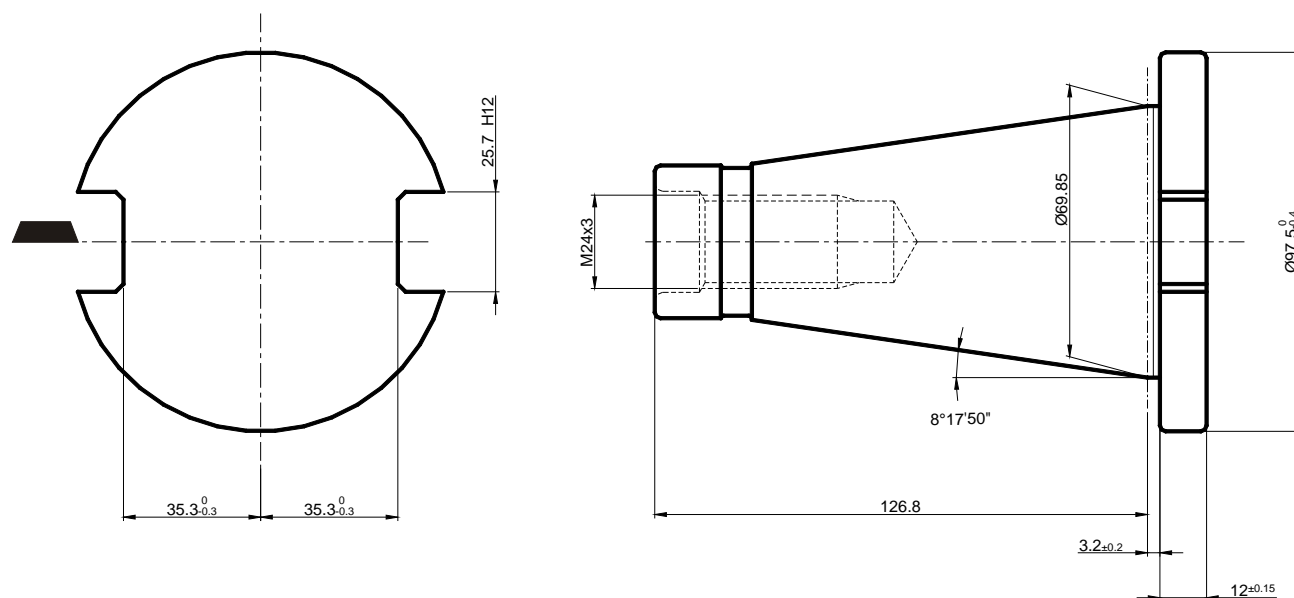
DIN 2080-A30



DIN 2080-A40



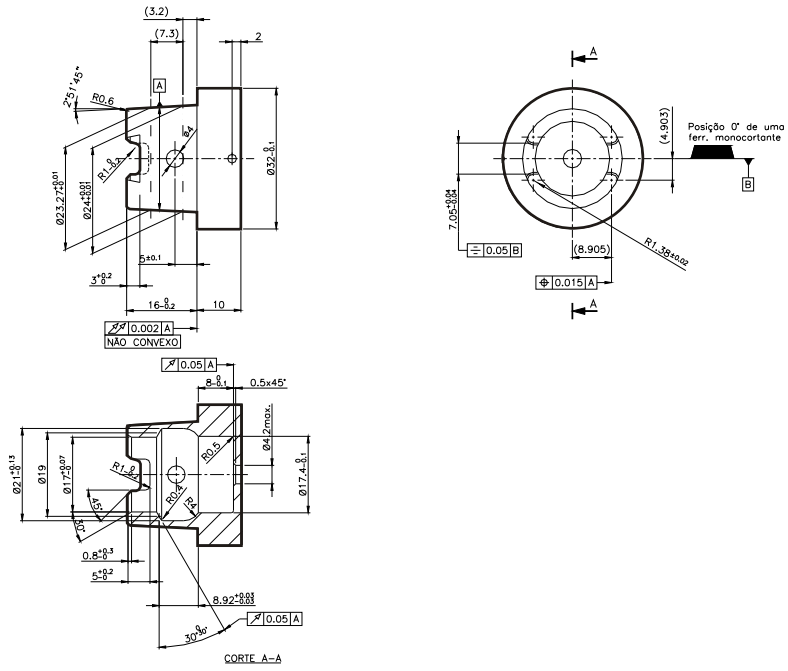
DIN 2080-A50



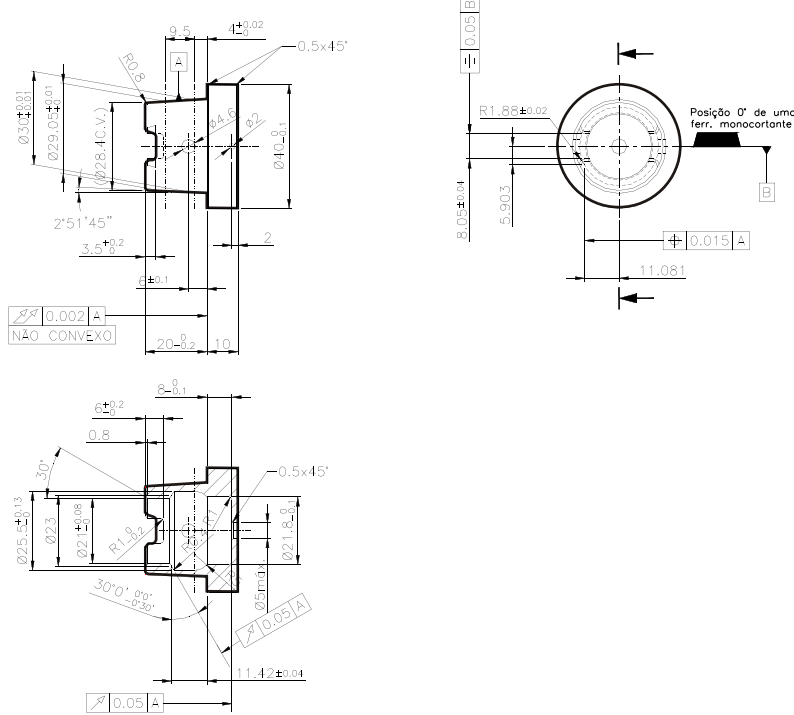




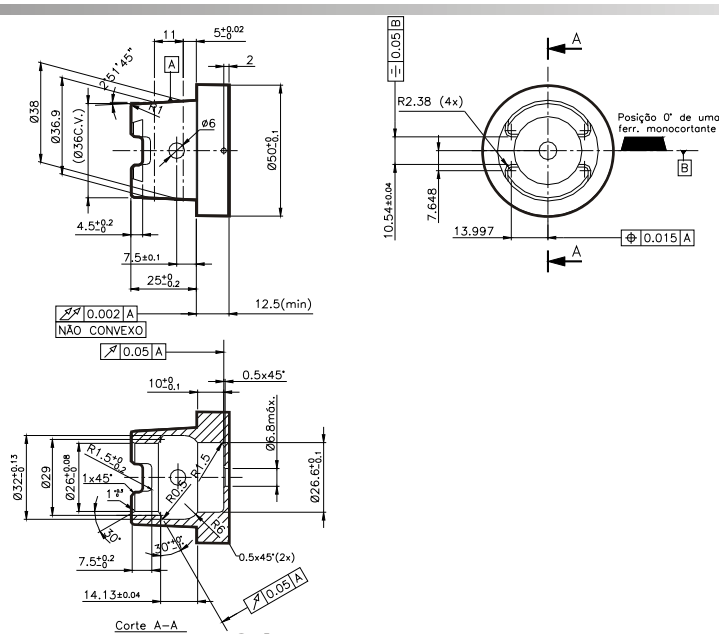
DIN 69893-C32



DIN 69893-C40



DIN 69893-C50







YNOWA FERRAMENTAS LTDA  
RUA CLÁUDIA SOARES, N° 153 - BAIRRO PORTAL DO SOL  
SÃO JOSÉ DOS PINHAIS - PARANÁ - CEP 83020-790  
Fone: (41)3595-4545 - Fax: (41)3595-4546  
CNPJ: 08.089.188/0001-06  
INSC. EST.: 90.375.281-50  
E-mail: ynowa@ynowa.com.br  
Site: www.ynowa.com.br

Representante: \_\_\_\_\_